



# STATISTIK

minyak dan gas bumi 2011

## Daftar Isi

Harga Minyak Mentah Indonesia   Indonesia Crude Price	2
Eksplorasi dan Produksi   Exploration and Production	
Survei Seismik 2D, 3D   2D, 3D Seismic Survey	3
Pengeboran Sumur Eksplorasi   Drilling Exploratory Wells	3
Produksi dan Pemanfaatan Gas Bumi   Production and Utilization of Natural Gas	5
Produksi Minyak Bumi dan Kondesat   Production of Crude Oil and Condensate	6
Produksi LNG   Production of LNG	7
Produksi LPG   Production of LPG	7
Pengolahan Minyak   Oil Refinering	
Pengolahan Minyak Mentah   Processing of Crude Oil	8
Hasil Pengolahan Minyak   Refined Products	8
Penjualan Domestik   Domestic Sales	9
Ekspor dan Impor   Export and Import	
Ekspor Produk Kilang   Export of Refinery Products	10
Ekspor LPG   Export LPG	10
Ekspor Minyak Mentah dan Kondensat   Export of Crude Oil and Condensate	10
Ekspor LNG   Export LNG	10
Impor Minyak Mentah per Negara   Crude Import	11



## HARGA MINYAK MENTAH INDONESIA

Indonesia Crude Price 2011

NO.	CRUDE OIL	JAN.	FEB.	MAR.	APR.	MAY	JUNE	JULY	AUG.	SEP.	OCT.	NOV.	DEC.
1	SLC	99.82	104.97	114.16	125.93	117.89	115.32	119.03	114.91	112.50	110.51	116.04	112.52
2	Arjuna	96.82	104.29	114.63	123.99	115.44	115.75	118.68	111.65	112.14	110.81	113.73	111.74
3	Attaka	98.87	105.99	116.68	126.20	117.62	117.30	119.80	113.34	113.88	112.78	115.80	114.33
4	Cinta	94.15	101.71	110.81	121.04	113.18	112.78	117.04	111.22	111.06	109.47	112.86	110.69
5	Duri	90.48	98.11	107.35	117.83	110.14	109.06	114.08	108.12	107.28	107.30	111.91	109.22
6	Widuri	94.23	101.68	110.89	121.03	113.16	112.88	117.12	111.27	111.10	109.51	112.91	110.81
7	Belida	98.29	105.42	116.12	125.73	117.21	116.91	119.53	113.32	113.84	112.83	115.92	114.52
8	Senipah Condensate	97.40	102.84	112.09	121.15	113.06	112.10	114.24	108.12	108.76	106.28	106.82	105.37
9	Anoa	99.27	106.39	117.08	126.60	118.02	117.70	120.20	113.74	114.28	113.18	116.20	114.73
10	Arun condensate	97.40	102.84	112.09	121.15	113.06	112.10	114.24	108.12	108.76	106.28	106.82	105.37
11	Badak	98.87	105.99	116.68	126.20	117.62	117.30	119.80	113.34	113.88	112.78	115.80	114.33
12	Bekapai	98.87	105.99	116.68	126.20	117.62	117.30	119.80	113.34	113.88	112.78	115.80	114.33
13	Belanak	91.86	99.33	109.67	119.03	110.48	110.79	113.72	106.69	107.18	105.85	108.77	106.78
14	Bentayan	97.86	103.01	112.20	123.70	115.93	113.36	117.07	112.95	110.54	108.55	114.08	110.56
15	Bontang Return Cond. (BRC)	93.16	95.87	105.83	113.38	106.34	99.90	103.92	101.00	101.49	94.19	93.25	96.61
16	Bula	89.98	97.61	106.85	117.33	109.64	108.56	113.58	107.62	106.78	106.80	111.41	108.72
17	Bunyu	99.82	104.97	114.16	125.93	117.89	115.32	119.03	114.91	112.50	110.51	116.04	112.52
18	Camar	97.20	104.67	115.01	124.37	115.82	116.13	119.06	112.03	112.52	111.19	114.11	112.12
19	Cepu	92.18	99.65	109.99	119.35	110.80	111.11	114.04	107.01	107.50	106.17	109.09	107.10
20	Geragai	100.01	105.16	114.35	126.12	118.08	115.51	119.22	115.10	112.69	110.70	116.23	112.71
21	Geragai Condensate	92.90	95.61	105.57	113.12	106.08	99.64	103.66	100.74	101.23	93.93	92.99	96.35
22	Handil Mix	96.97	104.44	114.78	124.14	115.59	115.90	118.83	111.80	112.29	110.96	113.88	111.89
23	Jambi	100.01	105.16	114.35	126.12	118.08	115.51	119.22	115.10	112.69	110.70	116.23	112.71
24	Jatibarang	99.82	104.97	114.16	125.93	117.89	115.32	119.03	114.91	112.50	110.51	116.04	112.52
25	Kaji	100.22	105.37	114.56	126.33	118.29	115.72	119.43	115.31	112.90	110.91	116.44	112.92
26	Kerapu	97.95	105.08	115.78	125.39	116.87	116.57	119.19	112.98	113.50	112.49	115.58	114.18
27	Klamono	89.98	97.61	106.85	117.33	109.64	108.56	113.58	107.62	106.78	106.80	111.41	108.72
28	Komp.P.Stt./Tap./Jene./Serdang	99.82	104.97	114.16	125.93	117.89	115.32	119.03	114.91	112.50	110.51	116.04	112.52
29	Lalang	99.87	105.02	114.21	125.98	117.94	115.37	119.08	114.96	112.55	110.56	116.09	112.57
30	Langsa	98.47	105.59	116.28	125.80	117.22	116.90	119.40	112.94	113.48	112.38	115.40	113.93
31	Lirik	99.71	104.86	114.05	125.82	117.78	115.21	118.92	114.80	112.39	110.40	115.93	112.41
32	Madura	96.95	104.42	114.76	124.12	115.57	115.88	118.81	111.78	112.27	110.94	113.86	111.87
33	Mengoepeh	100.01	105.16	114.35	126.12	118.08	115.51	119.22	115.10	112.69	110.70	116.23	112.71
34	Meslu	95.70	102.82	113.51	123.03	114.45	114.13	116.63	110.17	110.71	109.61	112.63	111.16
35	Mudi Mix	96.52	103.99	114.33	123.69	115.14	115.45	118.38	111.35	111.84	110.51	113.43	111.44
36	NSC/Katapa/Arbei	98.76	105.88	116.57	126.09	117.51	117.19	119.69	113.23	113.77	112.67	115.69	114.22
37	Pagerungan Kondensate	96.65	102.09	111.34	120.40	112.31	111.35	113.49	107.37	108.01	105.53	106.07	104.62
38	Pam. Juata/Sanga-Sanga Mix	99.92	105.07	114.26	126.03	117.99	115.42	119.13	115.01	112.60	110.61	116.14	112.63
39	Pangkajene	95.52	102.99	113.33	122.69	114.14	114.45	117.38	110.35	110.84	109.51	112.43	110.44
40	Ramba/Tempino	100.01	105.16	114.35	126.12	118.08	115.51	119.22	115.10	112.69	110.70	116.23	112.71
41	Rimau	99.72	104.87	114.06	125.83	117.79	115.22	118.93	114.81	112.40	110.41	115.94	112.42
42	Sangatta	99.82	104.97	114.16	125.93	117.89	115.32	119.03	114.91	112.50	110.51	116.04	112.52
43	Selat Panjang	99.82	104.97	114.16	125.93	117.89	115.32	119.03	114.91	112.50	110.51	116.04	112.52
44	Sepinggan Yakim Mix	96.82	104.29	114.63	123.99	115.44	115.75	118.68	111.65	112.14	110.81	113.73	111.74
45	South Jambi Condensate	95.46	100.90	110.15	119.21	111.12	110.16	112.30	106.18	106.82	104.34	104.88	103.43
46	Tanjung	100.01	105.16	114.35	126.12	118.08	115.51	119.22	115.10	112.69	110.70	116.23	112.71
47	Tiaka	87.48	95.11	104.35	114.83	107.14	106.06	111.08	105.12	104.28	104.30	108.91	106.22
48	Udang	99.90	105.05	114.24	126.01	117.97	115.40	119.11	114.99	112.58	110.59	116.12	112.60
49	Walio Mix	94.77	102.24	112.58	121.94	113.39	113.70	116.63	109.60	110.09	108.76	111.68	109.69
50	West Seno	98.22	105.34	116.03	125.55	116.97	116.65	119.15	112.69	113.23	112.13	115.15	113.68
Rata-Rata /Average		97.09	103.31	113.07	123.36	115.18	113.82	117.15	111.67	111.00	109.25	112.94	110.70

Daily crude oil spot price, 2011



Source: [www.iea.gov](http://www.iea.gov) and U.S. Energy Information Administration, based on Thomson

Annual average crude oil spot price, 2000-2011

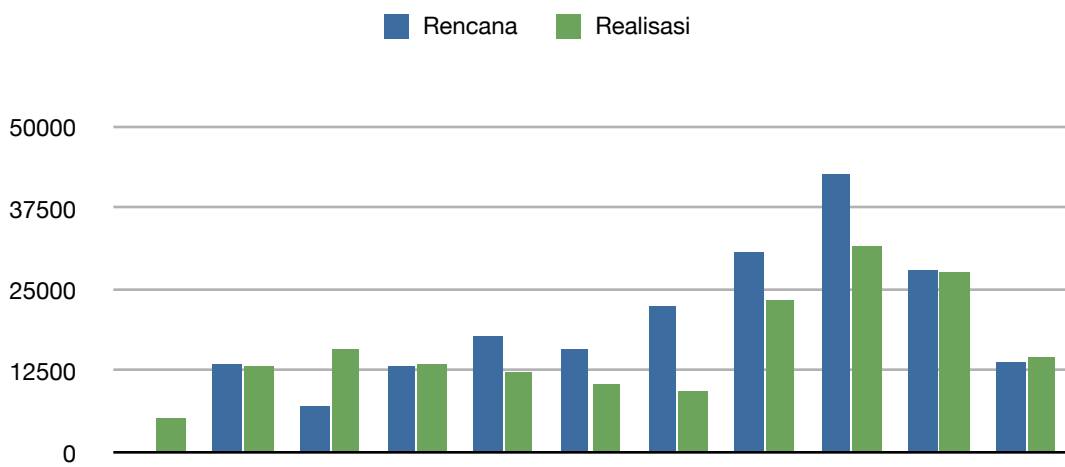


Source: [www.iea.gov](http://www.iea.gov) and U.S. Energy Information Administration, based on Thomson Reuters. Note: Brent is the underlying crude oil for the light sweet crude oil futures contracts on the Intercontinental Exchange (ICE). West Texas Intermediate (WTI) represents the spot price for crude oil at Cushing, Oklahoma, the physical delivery hub for NYMEX light sweet crude oil futures contracts.

# EKSPLORASI

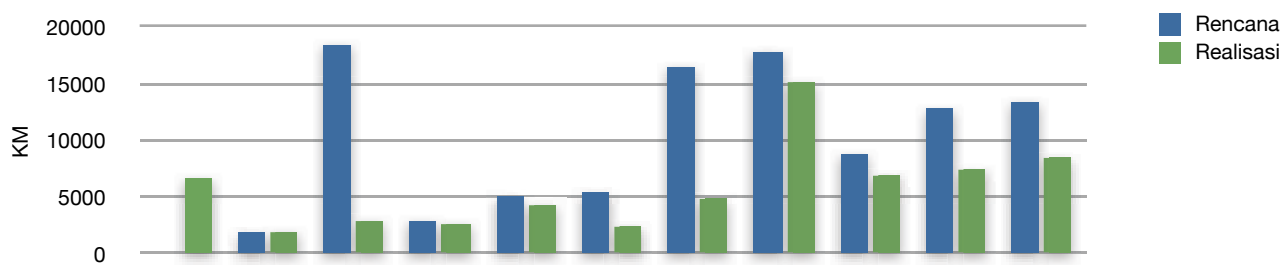
Exploration

## Survei Seismik 2D | 2D seismic survey



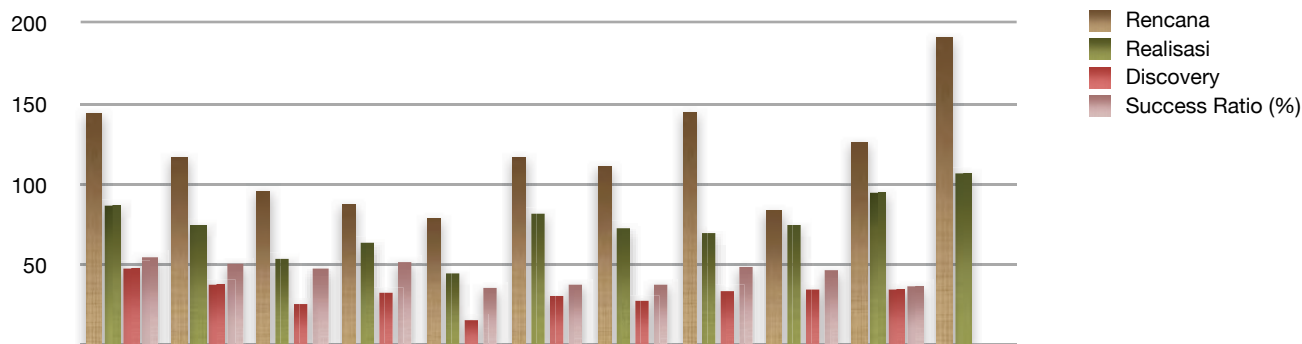
	2001	2002	2003	2004	2005	2006	2007	2008	2009	2010	2011
Rencana		13494	7054	13152	17776	15785	22393	30789	42646	27971	13752
Realisasi	5190	13170	15854	13497	12209	10392	9389	23364	31656	27606	14606

## Survei Seismik 3D | 3D Seismic Survey

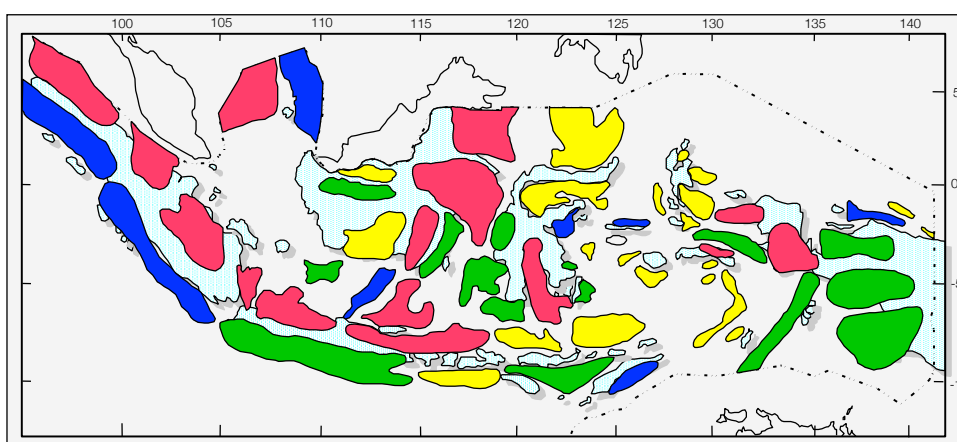


	2001	2002	2003	2004	2005	2006	2007	2008	2009	2010	2011
Rencana	-	1840	18373	2826	5010	5390	16446	17789	8714	12810	13377
Realisasi	6594	1896	2877	2606	4273	2374	4835	15136	6877	7411	8448

## Pemboran Sumur Eksplorasi | Drilling Exploratory Wells



	2001	2002	2003	2004	2005	2006	2007	2008	2009	2010	2011
Rencana	144	117	96	88	79	117	111	145	84	126	191
Realisasi	87	75	54	64	45	82	73	70	75	95	107
Discovery	48	38	26	33	16	31	28	34	35	35	
Success Ratio (%)	55	51	48	52	36	38	38	49	47	37	



- Producing Basin (16)
- Drilled and Proven Discovery but not Production yet (7)
- Drilled Basin No Discovery yet (15)
- Frontier Basin (22)

Peta Cekungan Sedimen Indonesia | Indonesia Tertiary Sediment Basins

## PRODUKSI DAN PEMANFAATAN GAS BUMI

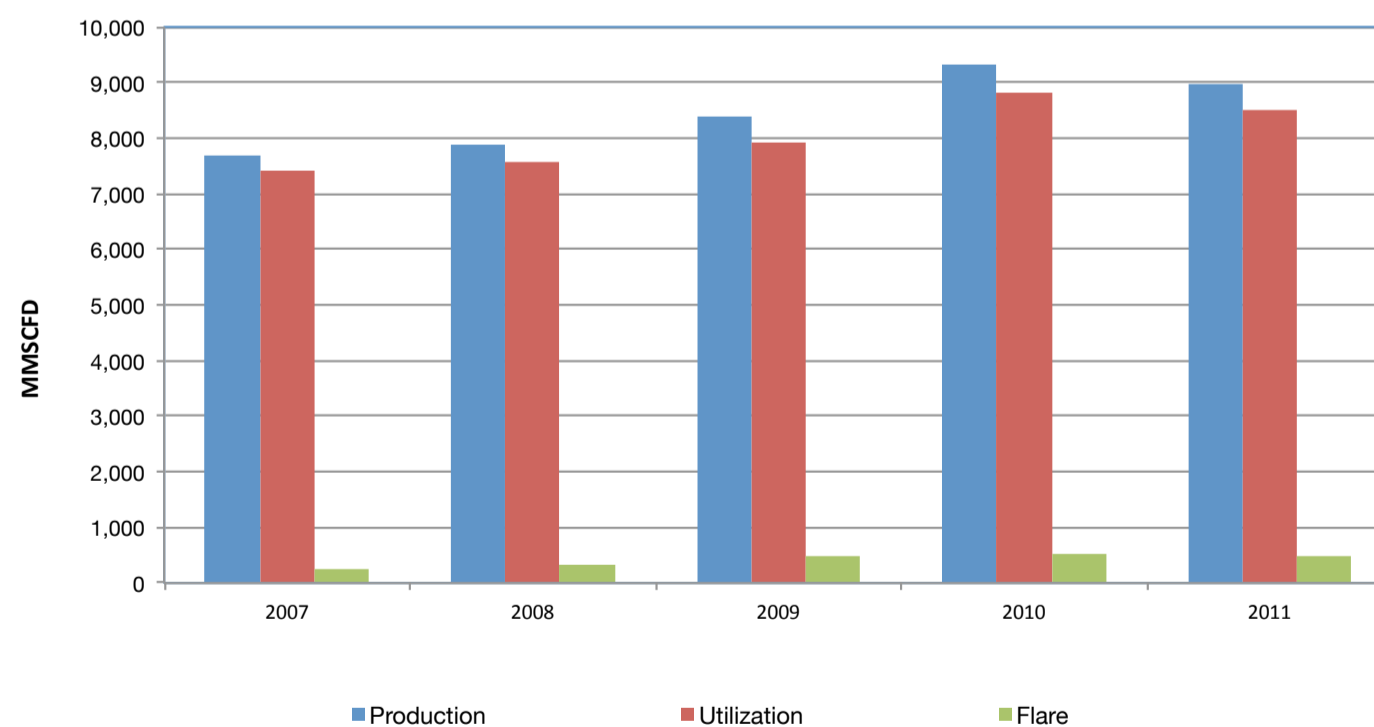
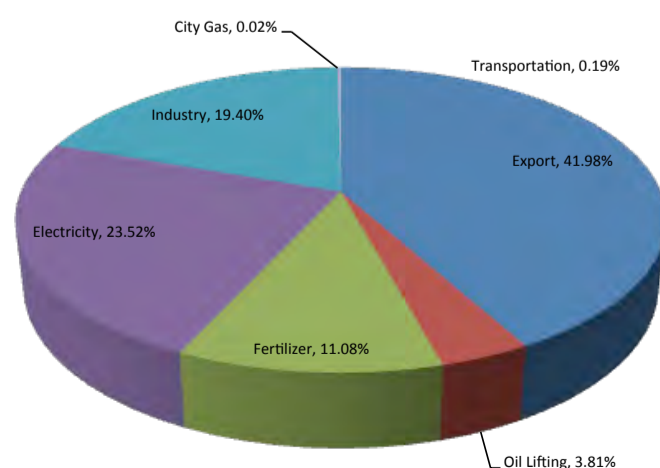
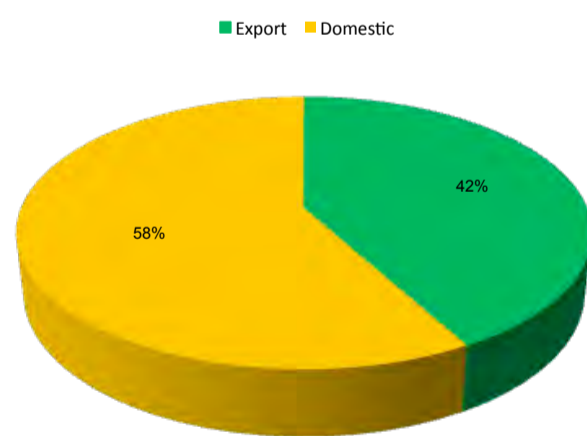
Production and Utilization of Natural Gas 2011

COMPANY	GROSS PRODUCTION			UTILIZATION							SRINKAGE	FLARED	VENTING	
	Own Use	Local	Fertilizer	Refinery	LPG/Lex Pl.	Condens	LNG (FEED)	PGN	GAS	Total				
<b>Pertamina</b>														
Onshore														
1 REGION I (SUMATERA:NAD, SBT, SBS)	187,735,369	31,579,951	31,514,514	52,156,078	8,824,582	1,588,627	-	-	52,583,221	-	178,246,973	-	9,488,396	-
2 REGION II (JAWA : JBB, JBT)	167,508,713	17,182,838	87,694,873	13,342,169	8,255,282	57,755	-	-	11,438,251	-	137,971,168	-	29,537,545	-
3 REGION III (KTI : KALIMANTAN, PAPUA)	3,952,252	2,309,243	-	-	-	-	-	-	-	-	2,309,243	-	1,643,009	-
Sub Total	359,196,334	51,072,032	119,209,387	65,498,247	17,079,864	1,646,382	0	0	64,021,472	0	318,527,384	0	40,668,950	0
<b>Pertamina JOB &amp; UBPEP</b>														
1 Lekom Maras/Hedi	-	-	-	-	-	-	-	-	-	-	0	-	-	-
2 UBPEP Benakat	-	-	-	-	-	-	-	-	-	-	0	-	-	-
3 UBPEP Tanjung	-	-	-	-	-	-	-	-	-	-	0	-	-	-
Sub Total	0	0	0	0	0	0	0	0	0	0	0	0	0	0
<b>Pertamina TAC</b>														
A. Onshore														
1 Medco Sembakung	2,146,555	328,989	-	-	-	-	-	-	-	-	328,989	-	1,817,566	-
2 Medco Sanga2	-	-	-	-	-	-	-	-	-	-	0	-	-	-
3 Semco	2,746,664	128,709	2,317,532	-	-	-	-	-	-	-	2,446,241	-	300,423	-
4 Intermega-Sabaku /Salawati	-	-	-	-	-	-	-	-	-	-	0	-	-	-
5 Banga Dua	1,099,156	46,053	991,834	-	-	-	-	-	-	-	1,037,887	-	61,269	-
6 Ranya Pamanukan	-	-	-	-	-	-	-	-	-	-	0	-	-	-
7 Pelangi Haurgeulis	-	-	-	-	-	-	-	-	-	-	0	-	-	-
8 Rainbow Emerald PS	659,153	173	658,980	-	-	-	-	-	-	-	659,153	-	-	-
9 Medco Kalimantan (Tarakan)	-	-	-	-	-	-	-	-	-	-	0	-	-	-
10 Ellipse Energy	1,243,923	25,149	-	-	-	-	-	-	1,218,774	-	1,243,923	-	-	-
11 Gelam	510,984	-	157,500	-	-	-	-	-	-	-	157,500	-	353,484	-
Sub Total	8,406,435	529,073	4,125,846	0	0	0	0	0	1,218,774	0	5,873,693	0	2,532,742	0
B. Offshore														
1 Kodeco Poleng	10,399,092	181,748	9,962,820	-	-	-	-	-	-	-	10,144,568	-	254,524	-
2 Salamander Energy (Glagah Kambuna)	12,651,477	919,261	11,657,364	-	74,852	-	-	-	-	-	12,651,477	-	-	-
Sub Total	23,050,569	1,101,009	21,620,184	0	74,852	0	0	0	0	0	22,796,045	0	254,524	0
<b>JOB-PSC</b>														
A. Onshore														
1 Talisman (OK)	4,257,290	552,461	-	3,406,485	-	-	-	-	-	-	3,958,946	137,786	160,558	-
2 Golden Spike	391,070	-	-	391,070	-	-	-	-	-	-	391,070	-	-	-
3 Medco ESP Tomori	2,185,037	-	-	-	-	-	-	-	-	-	0	-	2,185,037	-
4 Petrochina Salawati	2,334,517	439,060	-	-	-	-	-	-	-	-	439,060	-	1,895,457	-
5 Petrochina Tuban	4,247,833	355,329	-	1,820,641	-	38,204	-	-	-	-	2,214,174	-	2,033,659	-
6 Talisman Jambi Merang	24,272,536	1,235,555	19,145,693	-	-	-	-	-	-	-	20,381,248	-	683,448	3,207,840
Sub Total	37,688,283	2,582,405	19,145,693	5,618,196	0	38,204	0	0	0	0	27,384,498	137,786	6,958,159	3,207,840
B. Offshore														
1 Costa International	357,650	66,505	269,407	-	-	-	-	-	-	-	335,912	-	21,738	-
Total Pertamina + JOB + TAC	428,699,271	55,351,024	164,370,517	71,116,443	17,154,716	1,684,586	0	0	65,240,246	0	374,917,532	137,786	50,436,113	3,207,840
<b>Production Sharing Contracts</b>														
Onshore														
1 Exxon Mobil	168,517,565	10,274,542	-	20,827,935	-	-	-	137,415,088	-	-	168,517,565	-	-	-
2 Mobil Cepu Ltd	3,077,385	1,948,641	-	-	-	-	-	-	-	-	1,948,641	-	1,128,744	-
3 PT. C P I	17,303,759	17,303,759	-	-	-	-	-	-	-	-	17,303,759	-	-	-
4 Petroselat Ltd	47,328	-	-	-	-	-	-	-	-	-	0	-	47,328	-
5 Conoco Phillips Grissik Ltd	339,982,976	8,664,789	114,353,705	-	-	-	-	-	129,933,917	8.60E+07	338,935,725	-	1,047,251	-
6 ConocoPhillips South Jambi	230,199	72,261	-	-	-	-	-	-	-	143,840	216,101	-	14,098	-
7 Medco E&P Indonesia Lematang	17,186,210	784,739	-	-	-	-	-	-	9,819,033	-	10,603,772	614,527	5,967,911	-
8 Medco E&P Indonesia (SS.+CS)	46,420,607	1,334,526	21,495,759	14,007,170	-	-	-	-	8,951,119	-	45,788,574	-	632,033	-
9 Medco E&P Indonesia (Rimau)	2,968,436	1,499,900	-	-	-	925,660	-	-	-	-	2,425,560	159,546	383,330	-
10 Medco E&P Indonesia Kalimantan	1,891,343	191,919	1,678,055	-	-	-	-	-	-	-	1,869,974	-	21,369	-
11 Kangean Energy	10,164,565	1,370,079	-	8,733,967	-	-	-	-	-	-	10,104,046	-	46,282	14,237

COMPANY	GROSS PRODUCTION		UTILIZATION									SRINKAGE	FLARED	VENTING	
	Own Use	Local	Fertilizer	Refinery	LPG/Lex Pl.	Condens	LNG (FEED)	PGN	GAS	Total					
12 Vico	149,108,788	10,607,616	7,655,276	9,175,657	-	-	-	120,970,687	-	-	-	148,409,236	-	699,552	-
13 Petrochina Bermuda	8,435,984	5,170,441	613,799	-	-	304,427	323,253	-	-	-	-	6,411,920	1,652,047	372,017	-
14 Petrochina Jabung	96,878,076	9,407,044	-	-	-	8,599,739	3,466,613	-	-	-	4.74E+07	68,868,132	-	3,671,351	24,338,593
15 Petrochina Bangko	145	-	-	-	-	-	-	-	-	-	-	0	-	145	-
16 Energy Equity Epic (Sengkang)	14,138,181	64,767	14,049,887	-	-	-	-	-	-	-	-	14,114,654	-	23,527	-
17 EMP Brantas	1,656,190	84,500	399,779	-	-	-	-	-	1,164,899	-	-	1,649,178	-	7,012	-
18 Citic Seram Energy Ltd (Csel)	559,268	451,403	-	-	-	-	-	-	-	-	-	451,403	-	107,865	-
19 Mont'or Oil Kuala Tungkal	170,518	-	-	-	-	-	-	-	-	-	-	0	-	170,518	-
20 Benuo Taka	414,746	45,939	250,224	-	118,583	-	-	-	-	-	-	414,746	-	-	-
21 Kalila (Korinci Baru)	1,348,989	-	1,348,989	-	-	-	-	-	-	-	-	1,348,989	-	-	-
22 Kalila (Bentu)	5,031,491	-	5,031,491	-	-	-	-	-	-	-	-	5,031,491	-	-	-
23 Triangle Pase	1,131,043	84,316	-	163,734	-	-	-	449,790	-	-	-	697,840	208,350	-	224,853
Sub Total	886,663,792	69,361,181	166,876,964	52,908,463	118,583	9,829,826	3,789,866	258,835,565	149,868,968	1.34E+08	845,111,306	2,634,470	14,340,333	24,577,683	-
Offshore															
1 Premier Oil	58,320,675	2,156,995	-	-	-	-	-	-	-	5.53E+07	57,428,859	41,240	850,576	-	-
2 Conoco Phillips Natuna	209,264,659	72,710,702	-	-	-	352,633	-	-	-	1.34E+08	207,393,073	-	1,871,586	-	-
3 Star Energi (Kakap)	20,879,366	7,269,745	-	-	-	-	-	-	-	1.24E+07	19,656,359	-	1,223,007	-	-
4 Kondur Petroleum SA	2,641,320	1,505,721	-	-	-	-	-	-	-	-	1,505,721	-	1,135,599	-	-
5 CNOOC SES	41,990,175	11,169,956	23,590,278	-	-	-	-	-	-	-	34,760,234	-	7,229,941	-	-
6 Pertamina Hulu Energi (PHE) - WMD	58,137,323	1,036,657	40,525,435	8,818,431	-	-	-	-	6,903,725	-	57,284,248	-	853,075	-	-
7 Pertamina Hulu Energi (PHE) ONWJ	103,959,677	36,725,264	42,364,924	17,856,659	-	-	-	-	2,823,478	-	99,770,325	-	4,189,352	-	-
8 BP Berau (Tangguh)	394,636,700	32,201,000	-	-	-	-	861,430	306,426,310	-	-	339,488,740	-	9,222,280	45,925,680	-
9 Camar Res. Canada	1,282,450	-	-	-	-	-	-	-	-	-	0	-	1,282,450	-	-
10 Chevron Ind.Co	72,724,487	22,144,658	-	3,961,199	15,551,441	1,566,858	-	28,465,697	-	-	71,689,853	-	1,034,634	-	-
11 Chevron Makasar	19,329,375	13,057,049	-	758,381	-	19,819	-	5,442,435	-	-	19,277,684	-	51,691	-	-
12 Total E & P Indonesia	876,866,741	55,783,984	49,319,756	69,733,499	-	-	-	693,980,730	-	-	868,817,969	1,698	8,047,074	-	-
13 Santos (Madura Offshore)	43,279,284	792,832	-	-	-	-	-	-	42,452,631	-	43,245,463	-	33,821	-	-
14 Santos (Sampang)	19,656,150	108,566	19,022,644	-	-	-	-	-	-	-	19,131,210	-	524,940	-	-
15 Hess (Ujung Pangkah)	18,047,474	1,846,448	14,758,840	-	-	835,093	-	-	-	-	17,440,381	-	607,093	-	-
Sub Total	1,941,015,856	258,509,577	189,581,877	101,128,169	15,551,441	2,774,403	861,430	1,034,315,172	52,179,834	2.02E+08	1,856,890,119	42,938	38,157,119	45,925,680	-
Total Production Sharing	2,827,679,648	327,870,758	356,458,841	154,036,632	15,670,024	12,604,229	4,651,296	1,293,150,737	202,048,802	3.36E+08	2,702,001,425	2,677,408	52,497,452	70,503,363	-
Grand Total	3,256,378,919	383,221,782	520,829,358	225,153,075	32,824,740	14,288,815	4,651,296	1,293,150,737	267,289,048	3.36E+08	3,076,918,957	2,815,194	102,933,565	73,711,203	-

### GAS PRODUCTION AND UTILIZATION

**GAS ALLOCATION 2011  
(CONTRACTED DEMAND+POTENTIAL DEMAND)**



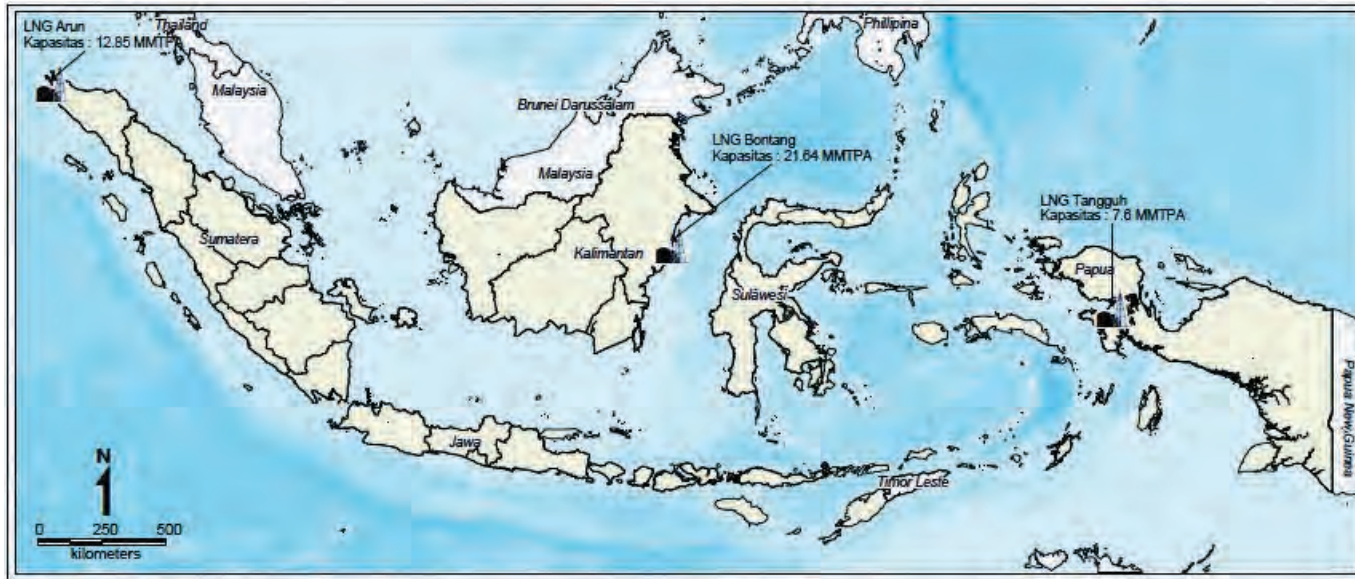
**PRODUKSI MINYAK BUMI DAN KONDENSAT** | Production of Crude Oil and Condensate 2011

Company	Contract Area	2011			Daily Average		
		Crude Oil	Condensate	Total	Crude Oil	Condensate	Total
<b>Pertamina &amp; Partners</b>							
Region I	Region Sumatra	7,725,032	0	7,725,032	21,164	0	21,164
Region II	Region Jawa	28,826,732	0	28,826,732	78,977	0	78,977
Region III	Region KTI	8,747,021	0	8,747,021	23,964	0	23,964
Sub Total		45,298,785	0	45,298,785	124,106	0	124,106
<b>JOB PSC</b>							
Onshore							
JOB Pertamina - Golden Spike	Pendopo & Raja Block, Sumsel	233,071	1,674	234,745	639	5	643
JOB Pertamina - Medco Tomori Ltd.	Toili Block, Sulteng	600,547	0	600,547	1,645	0	1,645
JOB Pertamina - PetroChina East Java	Tuban, Jatim	3,647,403	0	3,647,403	9,993	0	9,993
JOB Pertamina - PetroChina Salawati	Salawati Kelapa Burung, Irijabar	760,193	0	760,193	2,083	0	2,083
JOB Pertamina - Talsman (JM) Ltd.	Jambi Merang, Jambi	0	994,088	994,088	0	2,724	2,724
JOB Pertamina - Talsman (OK) Ltd.	Ogan Komering, Sumsel	1,591,468	55,717	1,647,185	4,360	153	4,513
Sub Total		6,832,682	1,051,479	7,884,161	220,409	33,919	254,328
Offshore							
JOB Pertamina - Costa International Ltd.	Pantai Gebang, Sumut	13,405	0	13,405	37	0	37
Total JOB PSC		6,846,087	1,051,479	7,897,566	220,842	33,919	254,760
<b>Production Sharing Contracts</b>							
Onshore							
BOB Pertamina Bumi Siak Pusako	Coastal Plains & Pekanbaru, Riau	5,906,927	0	5,906,927	16,183	0	16,183
Citic Seram Energy LMD	Sram Non Bula, Maluku	878,427	0	878,427	2,407	0	2,407
PT Chevron Pacific Indonesia	Rokan, Riau	127,300,762	2,020,246	129,321,008	348,769	5,535	354,304
PT Chevron Pacific Indonesia C & T (Siak)	Siak Block, Riau	840,254	0	840,254	2,302	0	2,302
Conoco Phillips (Grissik) Ltd.	Corridor, Sumsel	374,582	3,335,856	3,710,438	1,026	9,139	10,166
Conoco Phillips South Jambi	South Jambi Blok B, Jambi	0	3,764	3,764	0	10	10
ExxonMobil Oil Indonesia Ltd.	NAD	0	1,566,797	1,566,797	0	4,293	4,293
Kalrez Petroleum (Seram) Ltd.	Block Bula Seram, Maluku	156,433	0	156,433	429	0	429
Kangean Energy Indonesia Ltd.	Kangean Block Off. Ons. Jatim	887,618	92,395	980,013	2,432	253	2,685
Lapindo Brantas Inc.	Brantas, Jatim	385	0	385	1	0	1
PT Medco E&P Indonesia (Lematang)	Lematang, Sumsel	157	0	157	0	0	0
PT. Medco E&P Indonesia	Rimau, Sumsel	6,024,369	0	6,024,369	16,505	0	16,505
PT. Medco E&P Indonesia	South & Central Sumatera, Sumsel	2,728,436	0	2,728,436	7,475	0	7,475
PT Medco E&P Tarakan	Mamburungan, Kaltim	873,696	0	873,696	2,394	0	2,394
Mobil Cepu Ltd.	Cepu, Jatim	7,786,735	0	7,786,735	21,334	0	21,334
Montd'or/Pearl Oil (Tungkal) Ltd.	Tungkal, Jambi	231,914	0	231,914	635	0	635
PetroChina Bangko Ltd.	Bangko, Jambi	23,234	0	23,234	64	0	64
PetroChina International Bermuda Ltd.	Kepala Burung, Irijabar	2,008,330	357,077	2,365,407	5,502	978	6,481
PetroChina International Jabung Ltd.	Jabung, Jambi	3,427,948	2,990,519	6,418,467	9,392	8,193	17,585
Petroselat	Selat Panjang, Riau	87,777	0	87,777	240	0	240
PT Sarana Pembangunan Riau *)	Langgak, Riau	215,942	0	215,942	592	0	592
Sele Raya **)	Merangin II, Jambi	393,346	0	393,346	1,078	0	1,078
Triangle Pase	Pase, NAD	0	7,783	7,783	0	21	21
PT Vico Indonesia	Sanga-sanga, Kaltim	3,874,109	2,040,240	5,914,349	10,614	5,590	16,204
PT Sumatera Persada Energi	West Kampar, Riau	66,458	0	66,458	182	0	182
Sub Total Onshore		164,087,839	12,414,677	176,502,516	449,556	34,013	483,569
<b>Offshore</b>							
BP Tangguh	Tangguh, Irijabar	0	1,843,644	1,843,644	0	5,051	5,051
CNOOC SES Ltd.	South East Sumatera, Laut Jawa	12,635,499	0	12,635,499	34,618	0	34,618
Camar Resources Canada	Bawean, Jatim	373,322	0	373,322	1,023	0	1,023
Chevron Indonesia Company	Kutai, Kaltim	9,569,565	825,772	10,395,337	26,218	2,262	28,480
Chevron Makassar Ltd.	Makassar Strait	1,286,605	13,311	1,299,916	3,525	36	3,561
Conoco Phillips Indonesia Ltd.	South Natuna Sea Block A, Kepri	19,230,556	0	19,230,556	52,686	0	52,686
Hess (Indonesia Pangkah) Ltd.	Gresik, Jatim	1,653,412	0	1,653,412	4,530	0	4,530
Phe Wmo/Kodeco Energy Co. Ltd.	West Madura, Jatim	4,973,985	14,497	4,988,482	13,627	40	13,667
Kondur Petroleum SA	Malacca Strait, Riau	2,621,860	0	2,621,860	7,183	0	7,183
Pertamina Hulu Energy/BP West Java Ltd.	Block A Off, Laut Jawa	10,643,826	1,111,038	11,754,864	29,161	3,044	32,205
Premier Oil Natuna Sea B.V.	Natuna Sea Block A, Kepri	499,358	368,902	868,260	1,368	1,011	2,379
Santos (Madura Offs) PTY. Ltd.	Madura Offshore	852,211	0	852,211	2,335	0	2,335
Star Energy (Kakap) Ltd.	Natuna Sea Block B, Kepri	982,484	260,900	1,243,384	2,692	715	3,407
Total E&P Indonesia	Mahakam Block, Kaltim	8,343,641	21,446,127	29,789,768	22,859	58,757	81,616
Sub Total Offshore		73,666,324	25,884,191	99,550,515	201,826	70,916	272,741
<b>Total PSC</b>		<b>237,754,163</b>	<b>38,298,868</b>	<b>276,053,031</b>	<b>651,381</b>	<b>104,928</b>	<b>756,310</b>
<b>Total Indonesia</b>		<b>289,899,035</b>	<b>39,350,347</b>	<b>329,249,382</b>	<b>794,244</b>	<b>107,809</b>	<b>902,053</b>



**Produksi LNG** | Production of LNG 2011

PLANT	ANNUAL 2011				
	Barrels	MMSCF	M3	MMBTU	M. Ton
Arun	16,279,117.60	54,502.49	2,588,157.00	60,818,783.35	1,172,435.12
Badak	200,009,431.00	669,631.57	31,798,763.40	747,235,234.22	14,404,839.82
Tangguh	88,783,676.48	297,247.75	14,115,390.00	331,695,815.34	6,394,271.67
<b>Total</b>	<b>305,072,225.08</b>	<b>1,021,381.81</b>	<b>48,502,310.40</b>	<b>1,139,749,832.9</b>	<b>21,971,546.61</b>

**Produksi LPG** | Production of LPG 2011

REFINERY	PROPANE		BUTANE		MIX		TOTAL	
	Barrels	M. Ton	Barrels	M. Ton	Barrels	M. Ton	Barrels	M. Ton
<b>Oil Refinery</b>								
1 Dumai	0.00	0.00	480,297.00	41,086.14	0.00	0.00	480,297.00	41,086.14
2 Musi	0.00	0.00	1,174,369.00	100,459.28	0.00	0.00	1,174,369.00	100,459.28
3 Cilacap	0.00	0.00	1,302,719.00	111,438.75	0.00	0.00	1,302,719.00	111,438.75
4 Balikpapan	0.00	0.00	960,442.00	82,159.28	0.00	0.00	960,442.00	82,159.28
5 Balongan	0.00	0.00	4,321,773.00	369,698.29	0.00	0.00	4,321,773.00	369,698.29
Sub Total	0.00	0.00	8,239,600.00	704,841.74	0.00	0.00	8,239,600.00	704,841.74
<b>Gas Refinery</b>								
1 Santan (Chevron)	508,648.03	40,921.00	311,856.00	28,480.00	0.00	0.00	820,504.03	69,401.00
2 Jabung (PetroChina)	3,880,720.58	312,206.00	2,213,761.50	202,170.00	0.00	0.00	6,094,482.08	514,376.00
3 Arar (PetroChina)	0.00	0.00	0.00	0.00	36,928.71	3,159.00	36,928.71	3,159.00
4 Belanak (Conoco Phillips)	155,188.55	12,485.00	112,883.55	10,309.00	0.00	0.00	268,072.10	22,794.00
5 Pangkah (Hess)	319,774.18	25,726.00	253,459.65	23,147.00	0.00	0.00	573,233.83	48,873.00
6 Bontang (Badak-Total)	3,675,762.31	295,717.00	3,819,984.15	348,857.00	0.00	0.00	7,495,746.46	644,574.00
7 Mundu (Pertamina)	0.00	0.00	0.00	0.00	18,645.55	1,595.00	18,645.55	1,595.00
8 P. Brandan	0.00	0.00	0.00	0.00	256,840.99	21,971.00	256,840.99	21,971.00
9 Langkat (Maruta B. P.)	0.00	0.00	0.00	0.00	52,113.49	4,457.96	52,113.49	4,457.96
10 Kaji (Medco LPG Kaji)	0.00	0.00	0.00	0.00	178,898.85	15,303.58	178,898.85	15,303.58
11 Prabumulih (Titis S.)	0.00	0.00	0.00	0.00	301,840.71	25,820.42	301,840.71	25,820.42
12 Tugu Barat (Sumber D. K.)	0.00	0.00	0.00	0.00	32,578.23	2,786.85	32,578.23	2,786.85
13 Tambun (Odira E.P.)	0.00	0.00	0.00	0.00	284,919.90	24,372.96	284,919.90	24,372.96
14 Lembak (Surya E.P.)	0.00	0.00	0.00	0.00	468,037.79	40,037.45	468,037.79	40,037.45
15 Cilamaya (Yudhistira H.P.)	0.00	0.00	0.00	0.00	132,818.74	11,361.74	132,818.74	11,361.74
16 P. Tengah (Yudistira Energy)	0.00	0.00	0.00	0.00	147,434.05	12,611.98	147,434.05	12,611.98
17 Cemara (Wahana I.N.)	0.00	0.00	0.00	0.00	70,540.97	6,034.30	70,540.97	6,034.30
18 Tuban (TLI)	0.00	0.00	0.00	0.00	960,758.43	82,186.35	960,758.43	82,186.35
19 Gresik (Media Karya S.)	0.00	0.00	0.00	0.00	337,614.32	28,880.61	337,614.32	28,880.61
Sub Total	8,540,093.65	687,055.00	6,711,944.85	612,963.00	3,279,970.73	280,579.20	18,532,009.23	1,580,597.20
<b>Total</b>	<b>8,540,093.65</b>	<b>687,055.00</b>	<b>14,951,544.85</b>	<b>1,317,804.74</b>	<b>3,279,970.73</b>	<b>280,579.20</b>	<b>26,771,609.23</b>	<b>2,285,438.94</b>

**PENGOLAHAN MINYAK**

Oil Refining 2011

**Pengolahan Minyak Mentah | Processing Of Crude Oil 2011**

PRODUCTS	DUMAI	S.PAKNING	MUSI	CILACAP	BALIKPAPAN	BALONGAN	KASIM	CEPU	TPPI	TWU**	TOTAL
Crude Oil	37,768,728	12,245,679	29,256,713	44,843,262	56,714,800	37,457,147	0	339,697	0	0	218,626,026
Condensate	0	0	3,859,205	0	0	0	0	0	20,239,811	0	24,099,016
Imported Crude Oil	0	0	0	55,921,433	22,355,035	0	0	0	0	0	78,276,468
Others	8,033,038	120,104	3,698,405	5,904,098	6,313,271	20,726,155	7,729	7,435	0	0	44,810,235
<b>Total</b>	<b>45,801,766</b>	<b>12,365,783</b>	<b>36,814,323</b>	<b>106,668,793</b>	<b>85,383,106</b>	<b>58,183,302</b>	<b>7,729</b>	<b>347,132</b>	<b>20,239,811</b>	<b>0</b>	<b>365,811,745</b>

\* Data kumulatif ini sudah disempurnakan dan tidak mempresentasikan total dari perbulannya  
[The data have been refined and it doesn't represent total data per-month]

\*\* Tri Wahana Universal sampai saat ini belum memberikan laporan kegiatan produksi  
[Production activities report of Tri Wahana Universal has not been achieved yet]

**Hasil Pengolahan Minyak | Refined Products 2011**

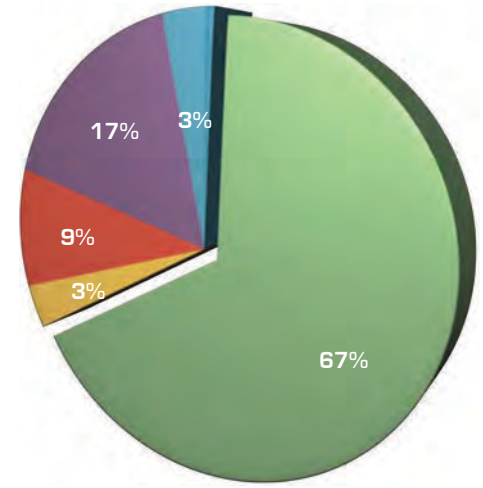
Products	DUMAI	S.PAKNING	MUSI	CILACAP	BALIKPAPAN	BALONGAN	KASIM	CEPU	TPPI	TWU	Total
<b>A. Fuels :</b>											
Avgas	0	0	0	0	0	0	0	0	0	0	0
Avtur	2,694,935	0	452,894	8,409,578	5,503,572	0	0	0	0	0	17,060,979
Premium	6,431,445	0	6,861,455	21,185,779	14,286,425	15,692,190	2,723	0	0	0	64,460,017
Kerosene	839,228	1,475,433	1,180,907	3,251,748	7,374,953	240,281	0	15,571	0	0	14,378,121
Gas Oil/ADO/HSD	25,977,117	2,531,454	10,688,378	30,302,061	33,899,026	12,846,830	0	146,453	3,176,919	0	119,568,238
Diesel Oil/IDO/MDF	0	0	361,502	857,153	132,887	0	0	0	0	0	1,351,542
Fuel Oil/DCO/IFO/MFO	159,792	0	4,091,000	16,013,361	12,191	0	0	0	0	0	20,276,344
Sub Total	36,102,517	4,006,887	23,636,136	80,019,680	61,209,054	28,779,301	2,723	162,024	3,176,919	0	237,095,241
<b>Bahan Bakar Khusus :</b>											
Pertamax Plus	0	0	0	0	0	736,383	0	0	0	0	736,383
Pertamax	0	0	5,540	0	271,901	2,168,061	0	0	0	0	2,445,502
Pertadex	0	0	0	0	0	28,155	0	0	0	0	28,155
Sub Total	0	0	5,540	0	271,901	2,932,599	0	0	0	0	3,210,040
<b>B. Non Fuels :</b>											
LPG	440,246	0	1,174,370	1,302,719	960,442	4,321,773	0	0	943,645	0	9,143,195
Lube Base Oil	0	0	0	3,064,817	0	0	0	0	0	0	3,064,817
Asphalt	0	0	0	1,965,235	0	0	0	0	0	0	1,965,235
Ready Wax	0	0	0	0	0	0	0	0	0	0	0
Paraffinic-95-60	0	0	0	188,574	0	0	0	0	0	0	188,574
Fully Refined Wax	0	0	0	0	0	0	0	0	0	0	0
Naptha	292,947	851,112	6,193,045	8,917,167	6,685,904	0	0	90,094	5,582,595	0	28,612,864
LSWR	174,681	7,045,040	0	3,802,124	12,999,032	0	0	0	0	0	24,020,877
LSFO	0	0	4,621,453	0	0	0	0	0	0	0	4,621,453
Green Coke	2,225,343	0	0	0	0	0	0	0	0	0	2,225,343
SBPX-40B	0	0	166,959	0	0	0	0	0	0	0	166,959
Laws/SMT	0	0	126,766	0	13,272	0	0	0	0	0	140,038
Pertasol CA	0	0	0	0	0	0	0	10,919	0	0	10,919
Pertasol CB	0	0	0	0	0	0	0	27,014	0	0	27,014
Pertasol CC	0	0	0	0	0	0	0	16,414	0	0	16,414
HOMC	0	0	0	0	0	11,908,334	0	0	0	0	11,908,334
Propylene	0	0	0	0	0	1,855,486	0	0	0	0	1,855,486
Benzene	0	0	0	0	0	0	0	0	2,192,170	0	2,192,170
Paraxylene	0	0	0	0	0	0	0	0	4,364,211	0	4,364,211
Orthoxylene	0	0	0	0	0	0	0	0	10,822	0	10,822
Heavy Aromatic	0	0	0	0	0	0	0	0	234,836	0	234,836
PTCF	0	0	0	0	0	0	0	0	403,349	0	403,349
Sulphur Cair	0	0	0	37,377	0	0	0	0	0	0	37,377
Minarex	0	0	0	242,690	0	0	0	0	0	0	242,690
Musicool	0	0	1,647	0	0	0	0	0	0	0	1,647
Marine Gas Oil	0	0	0	0	69,431	0	0	0	0	0	69,431
Unconverted Oil	2,389,565	0	0	0	0	0	0	0	0	0	2,389,565
Decant Oil	0	0	0	0	0	4,055,144	0	0	0	0	4,055,144
Slack Wax	0	0	0	155,670	0	0	0	0	0	0	155,670
Solvent Solphy II	201	0	0	0	0	0	0	0	0	0	201
Yellow Batik Wax	0	0	0	0	3,404	0	0	0	0	0	3,404
Slop Oil Wax	0	0	0	0	233	0	0	0	0	0	233
Net Bottom Fractionator	0	0	0	0	359,662	0	0	0	0	0	359,662
HAP 32	0	0	3,524	0	0	0	0	0	0	0	3,524
H. Semi refined (26BS)	0	0	0	0	8,204	0	0	0	0	0	8,204
Smooth Fluid 05	0	0	0	0	18,060	0	0	0	0	0	18,060
Sub Total	5,522,983	7,896,152	12,287,764	19,676,373	21,117,644	22,140,737	0	144,441	13,731,628	0	102,517,722
<b>C. Total Products</b>	<b>41,625,500</b>	<b>11,903,039</b>	<b>35,929,440</b>	<b>99,696,053</b>	<b>82,598,599</b>	<b>53,852,637</b>	<b>2,723</b>	<b>306,465</b>	<b>16,908,547</b>	<b>0</b>	<b>342,823,003</b>
<b>D. Balance</b>	<b>4,176,266</b>	<b>462,744</b>	<b>884,883</b>	<b>6,972,740</b>	<b>2,784,507</b>	<b>4,330,665</b>	<b>5,006</b>	<b>40,667</b>	<b>3,331,264</b>	<b>0</b>	<b>22,988,742</b>
<b>Total</b>	<b>45,801,766</b>	<b>12,365,783</b>	<b>36,814,323</b>	<b>106,668,793</b>	<b>85,383,106</b>	<b>58,183,302</b>	<b>7,729</b>	<b>347,132</b>	<b>20,239,811</b>	<b>0</b>	<b>365,811,745</b>

## KONSUMSI DALAM NEGERI

Domestic Consumption 2011

Jenis Bahan Bakar	Jumlah (kilo liter)
PREMIUM	25,783,240.553
KEROSENE/MINYAK TANAH/AP 0706,BULK	1,984,939.298
SOLAR/HSD/MGO/ADO	25,792,336.598
INDUSTRIAL DIESEL OILS (IDO),BULK	237,310.509
INDUSTRIAL FUEL OIL / MFO, BULK	3,584,091.450
MFO 380	210,510.742
BIOSOLAR	7,176,445.118
BIOSOLAR INDUSTRI	4,361.008
PERTAMAX,BULK	660,968.900
PERTAMAX PLUS	128,444.000
PERTAMINA DEX R-10,REFILL JERIGEN 10 L	160.329
PERTAMINA DEX R-20,REFILL JERIGEN 20 L	37.000
PERTAMINA DEX, BULK	5,736.000
PERTAMINA DEX,CAN 10 L	339.370
PERTAMINA DEX,CAN 20 L	119.300
Minyak Bakar	109,286
<b>Overall Result</b>	<b>65,678,326.175</b>

- ABRI
- Transportasi
- Industri
- Layanan Umum/Usaha K
- Listrik
- not Assigned Customer Group
- Rumah Tangga

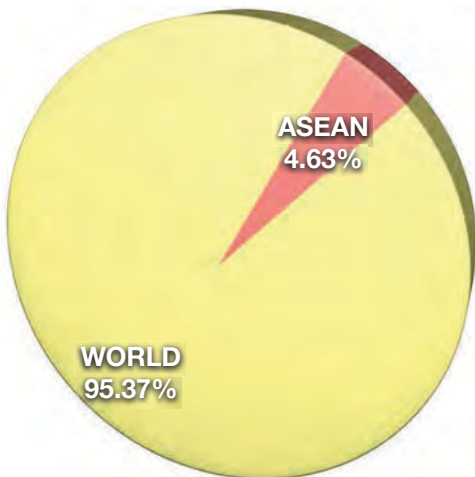


note :

1. Ekspor Bahan Bakar Minyak dilakukan kerana ada perjanjian G to G antara Pemerintah Indonesia dengan Pemerintah Singapura, Malaysia dan Timor Leste
2. Ekspor minyak tanah dilakukan kerana adanya kelebihan stok terkat program konversi Minyak tanah ke LPG 3 kg
3. Ekspor LPG dilakukan kerana ada perjanjian G to G antara pemerintah Indonesia dengan Pemerintah Timor Leste serta hasil kilang Badan Usaha Pengolahan Gas Bumi yang belum dapat diserap pasar dalam negeri
4. data un-audited

### Perbandingan Konsumsi Minyak Dunia dengan ASEAN

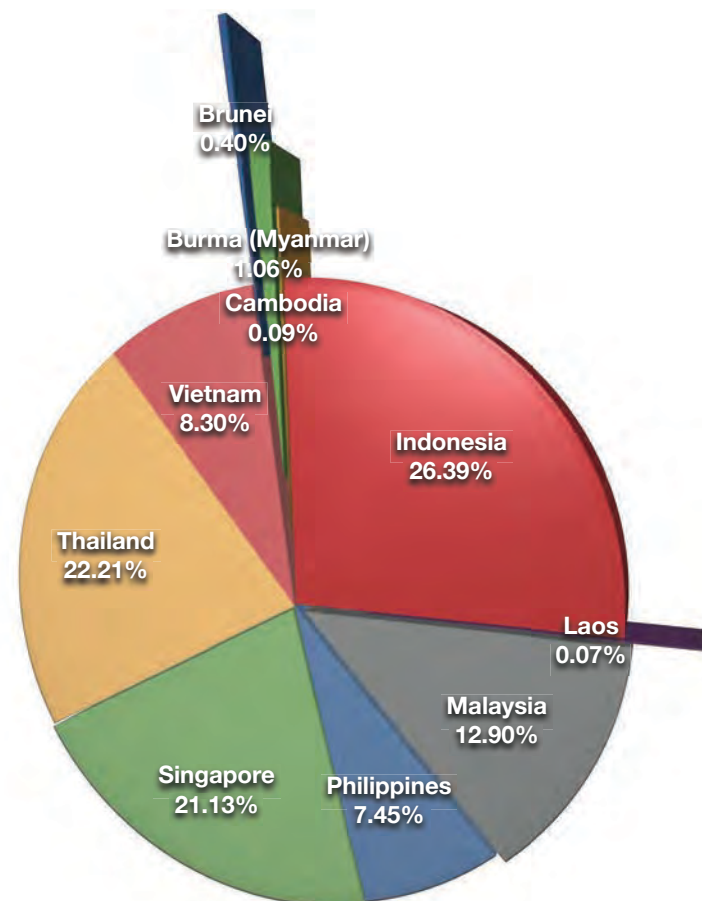
Consumption of Petroleum in World vs ASEAN (thousand barrels per day)



source : [www.iea.org](http://www.iea.org)

### Konsumsi Minyak di negara - negara ASEAN

Consumption of Petroleum in ASEAN 2011 (thousand barrels per day)



source : [www.iea.org](http://www.iea.org)

## EKSPOR DAN IMPOR

Export and Import 2011

### Ekspor Produk Kilang | Export of Refinery Product 2011

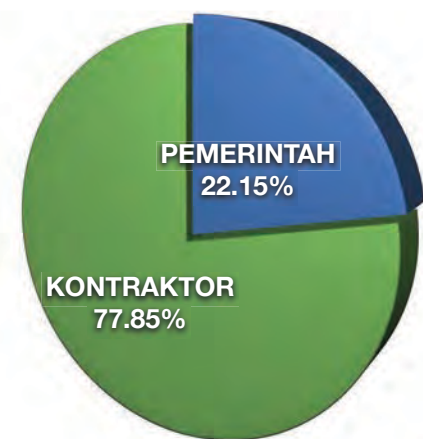
Products	Kuantitas (KL)
<b>Bahan Bakar Minyak</b>	
AVTUR	1,015.00
MINYAK BENSIN RON 95	840.00
MINYAK BENSIN RON 88	12,653.00
MINYAK SOLAR	17,975.00
MINYAK TANAH	429,219.00
<b>Hasil Olahan</b>	
LSWR	2,251,620.08
VACUUM RESIDUE (LSFO)	721,515.72
NAPHTHA	209,305.00
DECANT OIL	567,641.02
<b>Total</b>	<b>3,750,081.82</b>

### Ekspor LPG | Export LPG 2011

Nama Badan Usaha	Kuantitas (MT)
PT Pertamina (Persero)	371.00
PT Tuban LPG Indonesia	76,195.00
<b>Total</b>	<b>76,566.00</b>

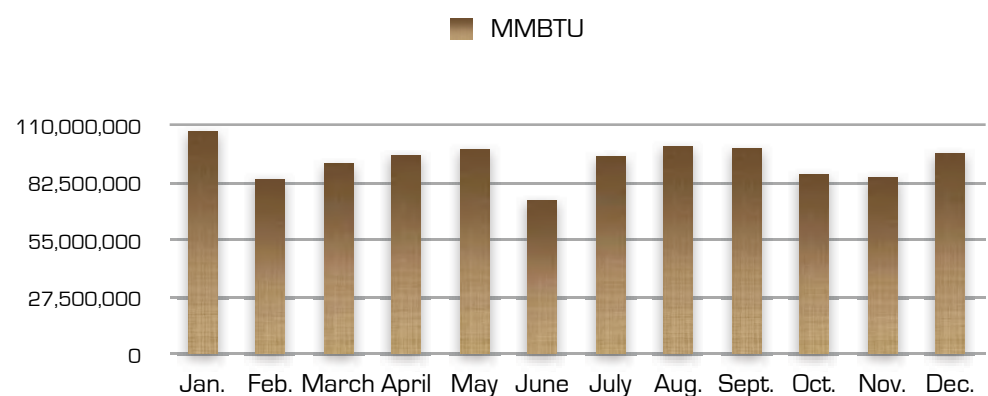
### Ekspor Minyak Mentah dan Kondensat Indonesia | Export Crude and Condensate 2011

BULAN	PEMERINTAH (BBLs)	KONTRAKTOR (BBLs)	TOTAL (BBLs)
JANUARI	3,311,249	7,263,983	10,575,232
FEBRUARI	2,557,944	8,628,378	11,186,322
MARET	2,592,820	9,147,882	11,740,702
APRIL	2,382,818	7,635,712	10,018,530
MEI	2,524,877	8,346,497	10,871,374
JUNI	2,019,599	7,756,684	9,776,284
JULI	2,936,934	7,477,810	10,414,744
AGUSTUS	2,614,355	7,601,202	10,215,557
SEPTEMBER	2,268,396	8,694,379	10,962,775
OKTOBER	1,826,228	7,803,976	9,630,204
NOVEMBER	1,624,003	9,861,602	11,485,605
DESEMBER	2,089,912	10,827,912	12,917,824
<b>TOTAL</b>	<b>28,749,134</b>	<b>101,046,019</b>	<b>129,795,153</b>



### Ekspor LNG | Export LNG 2011

Month	MMBTU
January	107,194,902.28
February	84,481,030.00
March	91,841,927.00
April	95,926,149.73
May	98,870,759.00
June	74,108,800.00
July	95,417,297.00
August	100,091,120.00
September	99,216,710.04
October	86,810,797
November	85,341,287
December	96,757,419
<b>TOTAL</b>	<b>1,116,058,198.05</b>



**Realisasi Impor Minyak Mentah per negara asal** | *crude oil imports by country 2011*

Negara Asal	2003	2004	2005	2006	2007	2008	2009	2010	2011
SAUDI ARABIA	41,339,170.00	37,879,588.00	39,370,973.00	41,104,335.00	37,492,581.00		37,778,523.00	44,050,541.00	35,601,875.00
THAILAND	4,929,038.00	8,596,294.00	6,076,856.00		-	-		-	-
MALAYSIA	8,980,884.00	11,194,281.25	12,295,808.00	13,436,675.00	12,898,109.00		17,006,829.00	24,451,592.00	20,534,587.89
VIETNAM	8,365,693.09	9,574,904.94	7,180,909.97	8,759,629.00	6,421,267.33		4,142,383.67	-	485,781.92
AUSTRALIA	6,287,874.25	5,164,110.52	5,661,452.12	5,087,132.83	1,746,943.89		650,537.09	-	-
BRUNEI	3,674,660.00	7,317,693.00	19,221,220.00	23,046,601.00	24,039,812.00		12,835,025.00	7,644,040.00	8,925,211.00
NIGERIA	29,393,837.00	26,697,782.00	16,242,111.00		7,514,801.00		11,453,001.00	10,344,698.00	24,004,353.79
CHINA	10,594,779.00	10,795,673.70	9,620,135.00	10,044,660.00	611,002.00		-	616,988.00	-
LIBYA	3,646,681.00	-	1,037,908.00	5,992,414.00	9,089,452.00		999,276.00	-	-
ALGERIA	8,068,368.00	4,500,062.00	993,838.00	2,023,181.00	2,624,360.00		4,547,772.00	1,988,948.00	-
PAPUA N GUINEA	3,134,773.00	1,860,618.00	601,649.00	3,295,556.00		-	-	-	-
RWANDA	1,938,925.00	6,821,381.00	-	-	-		-	-	-
YAMAN	1,939,917.00	-	-	-	-		-	-	-
ANGOLA	2,943,342.00	8,715,524.00	-	-	-		-	-	-
IRAN	1,888,712.00	-	-	-	-		-	-	-
AZERBAIJAN	-	4,986,873.66	-	1,000,533.66	1,588,075.00		-	-	-
SUDAN	-	2,380,711.00	-	2,441,466.00	4,306,231.00		10,772,645.00	655,341.00	-
IRAK	-	2,004,092.00	-	-	-		-	-	-
RUSIA	-	-	-	-	-		-	-	1,813,992.05
KOREA	-	-	-	-	-		-	-	5,496,623.33
TURKEY	-	-	-		7,478,917.22		19,933,385.02	11,340,882.16	-
<b>TOTAL</b>	<b>137,126,653.3</b>	<b>148,489,589.1</b>	<b>118,302,860.1</b>	<b>116,232,183.5</b>	<b>115,811,551.4</b>	<b>97,005,665.16</b>	<b>120,119,376.8</b>	<b>101,093,030.2</b>	<b>96,862,424.98</b>

